



Deadline for finished flowers
DECEMBER 15, 2016
 Stay tuned for updates
 on drop-off and
 delivery info

FLOWER-MAKING TUTORIAL - PLASTICS

The details outlined in this tutorial sheet are only a starting example. Use these basic techniques to create something of your own imagination. Make sure all connections are secure and can withstand jostling and reattachment to the overall cascade textile. Strong adhesives can substitute for wired connections as long as they are secure. *Here are the important specifications: 9" maximum diameter, 4" minimum diameter. IMPORTANT - please use the tag template provided online to copy and attach a thank-you message to EACH & EVERY flower you or your group makes.*

SUPPLIES: Plastic bottles, cups, containers; Garden Shears; Heat Gun (optional); 26 gauge floral wire; Dremel Drill (1/16" bit) OR Awl; Various Embellishments such as: cut plastic shapes, bottle caps, beads, drinking straws (shredded as shown), buttons, "goo be gone" adhesive residue remover

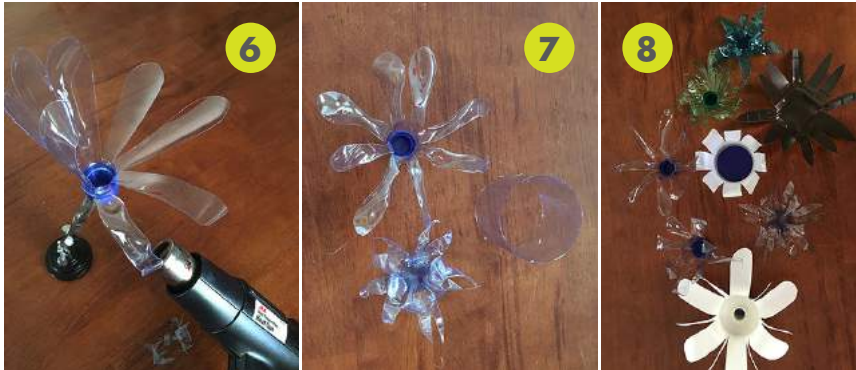
Any questions - contact: **Ann Morton - annmorton@mac.com** - use "Re-Thanks flower making questions" in your subject line.

CUTTING THE PARTS



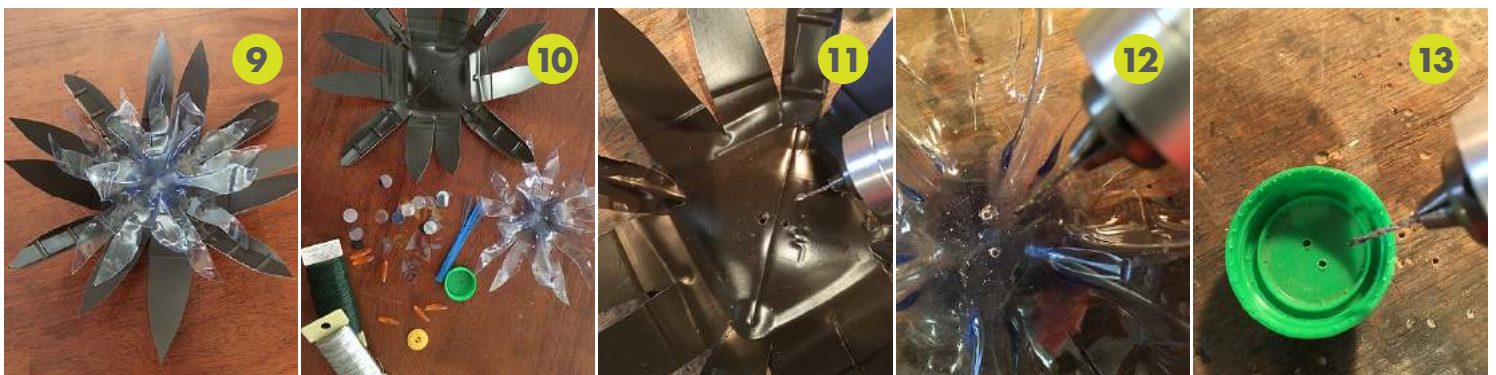
1.) Starting bottle, labels removed. (If needed, use "goo be gone" to remove any sticky label residue.) **2.)** With garden shears, cut the top and bottom away from the center body of the bottle. The longer you make the top and bottom, the longer your finished petals. **3.)** The bottoms typically resemble a flower, so follow the existing molded shape of the bottle to cut petal shapes. **4.)** Bottle bottom fully cut. **5.)** Bottle top cut in long petal shapes. **IMPORTANT - Petal cutting should occur from the bottle edge inward into the body. Petal shape ends are achieved by clipping from the edge rather than trying to get the shears down into the body to cut shapes.**

MELTING THE FLOWER SHAPES (optional)



To add an extra textural quality to the cut petals, you can use a heat gun to slightly melt the plastic. This operation is hot, proceed with caution to avoid burning your fingers. **6.)** With heat gun, slowly and carefully heat petals. If petals move in an undesirable way, while still warm, grip petal with a paper towel or small cloth to shape as the petal cools. This takes some practice, and different plastics behave differently when melted. Try to melt only one petal at a time and shape as you go. **7.)** Finished flower parts after heat gun melting. **8.)** Variety of flower part possible with various plastic containers - melted and unmelted.

PAIRING FLOWER PARTS/PREP FOR ATTACHMENTS



9.) Pair two flower parts to your liking. **10.)** Gather a selection of embellishments (beads, shredded straw, plastic bits), floral wire, flower center element and backer (bottle cap and button*). **11.), 12.), 13.)** Drill small holes in the centers of each flower part and the flower center (and backer if needed) - *for this example, a button has been used as the backer, but you can use another bottle cap and drill both the backer and center element). Holes should be about 1/4" apart and align as closely as possible from one part to the other. (NOTE: If pairing a bottle top, twist on the bottle cap and use it as the surface to drill through and connect to other parts.)

FLOWER PARTS ATTACHMENT AND EMBELLISHMENTS



14.) Cut 4 lengths of floral wire to approx. 10"-12" (length depends on the length of embellishment you desire). Insert two wires through each hole in the bottom flower part and then through the button which is positioned on under-side of the flower part. (Remember, a drilled bottle cap can replace the button as a backer element). Twist the 2 groups of wires to secure, leaving about 3"- 4" tails of wire after twisting. **15.)** Then turn over the flower and thread the wires, first through the top flower part, then through the center element, (2 wires through each hole). Twist the 2 groups of wire to secure. You should have 6"- 8" of wire for embellishments. **16.)** If using a shredded straw, insert over all 4 wires. Then on each wire, begin inserting the various embellishments - starting with beads to secure the straw in place. Continue to thread and stack the embellishment elements onto each individual wire to create a pattern of your liking. **17.)** When you reach the end of each embellished wire, use a bead with a hole large enough to secure the ending by first threading the wire through the bead, then looping the end around and back through the bead. You can do this multiple times to secure. When secured, clip excess wire end. **18.)** Complete this process to secure all embellished wire ends. Leave tail ends on backside for later attachment. **And then the most important part - attach the tag with your message of thanks - NOW YOU ARE FINISHED!**