



Deadline for finished flowers  
**DECEMBER 15, 2016**  
 Stay tuned for updates  
 on drop-off and  
 delivery info

## FLOWER-MAKING TUTORIAL - ALUMINUM

The details outlined in this tutorial sheet are only a starting example. Use these basic techniques to create something of your own imagination. Make sure all connections are secure and can withstand jostling and reattachment to the overall cascade textile. Strong adhesives can substitute for wired connections as long as they are secure. *Here are the important specifications: 9" maximum diameter, 4" minimum diameter. IMPORTANT - please use the tag template provided online to copy and attach a thank-you message to EACH & EVERY flower you or your group makes.*

**SUPPLIES:** Aluminum cans; Garden Shears; 26 gauge floral wire; Dremel Drill (1/16" bit) OR Awl; Various Embellishments such as: cut plastic shapes, bottle caps, beads, drinking straws (shredded as shown), buttons, pull tabs

Any questions - contact: **Ann Morton - annmorton@mac.com** - use "Re-Thanks flower making questions" in your subject line.

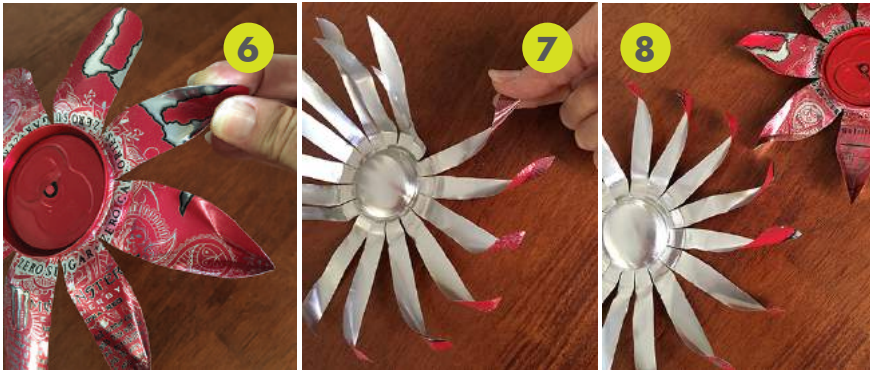
### CUTTING THE PARTS



**1.)** With garden shears, cut the can apart in two halves. The bottom of the can will be the bottom layer of the flower, so you can cut them equally, or longer on the bottom half. The length determines the length of the petals. **2.)** Cut the top half in 8 equal strips. Be sure to cut all the way to the top rim at the top of the can. **3.)** Clip to round the ends of cut strips. **4.)** Cut the bottom half in 16 equal strips. Be sure to cut all the way over the ridge to the very bottom rim. **5.)** Round one side of petals on bottom half. **IMPORTANT - Petal cutting should occur from the can edge inward into the body. Petal shape ends are achieved by clipping from the edge as shown.**

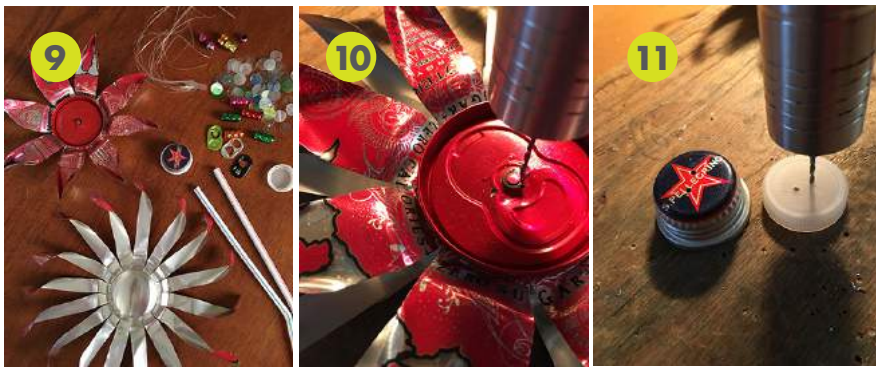


## MOLDING THE FLOWER SHAPES



Bend all the petals outward to radiate out from the center of the can structure. To add an extra textural quality to the cut petals, you can bend the aluminum to create more dimension. Be careful, the aluminum is sharp, watch your fingers! **6.)** On the top half, (wider petals), bend the ends between your fingers to create a point on the petal end as shown. **7.)** On the bottom half, twist the petal toward the straight edge to curl the ends as shown. **8.)** The two can parts - the top shows the printed side of the can, the bottom shows the inside silver side of the can. These parts with stack with the top part making the top of the flower.

## PAIRING FLOWER PARTS/PREP FOR ATTACHMENTS



**9.)** Gather a selection of embellishments (beads, shredded drinking straw, plastic bits, pull tabs, floral wire, flower center element and backer (printed cap and simple plastic cap\*). **10.)** Stack and align the top and bottom halves of the can - top with printing up, bottom with inside silver up. Hold together and drill so that holes match and align. Holes should be about 1/4" - 3/8" apart to clear tab attachment on the top of can. **11.)** Drill small holes in the flower center element and backer cap - \*for this example, a simple plastic cap has been used as the backer, but you can use a button instead for the backer or center element of the flower.

## FLOWER PARTS ATTACHMENT AND EMBELLISHMENTS



**12.)** Cut 4 lengths of floral wire to approx. 10"-12" (length depends on the length of embellishment you desire). Insert two wires through each hole in the both flower parts and then through the backer cap which is positioned on under-side of the flower assembly. (Remember, a button can replace the drilled cap as a backer element). Twist the 2 groups of wires to secure, leaving about 3"-4" tails of wire after twisting. **13.)** Then turn over the flower and thread the wires, through the center element, (2 wires through each hole). Twist the 2 groups of wire to secure. You should have 6"-8" of wire for embellishments. **16.)** If using a shredded straw, insert over all 4 wires. Then on each wire, begin inserting the various embellishment elements - starting with elements that will secure the straw in place. Continue to thread and stack the embellishment elements onto each individual wire to create a pattern of your liking. **17.)** When you reach the end of each embellished wire, use a bead with a hole large enough to secure the ending by first threading the wire through the bead, then looping the end around and back through the bead to secure. This example winds the excess end around a drinking straw to make a curly-cue. **18.)** Complete this process to secure all embellished wire ends. Leave tail ends on backside for later attachment. *And then the most important part - attach the tag with your message of thanks - NOW YOU ARE FINISHED!*